

ZOOL 3500

# Conservation Biology

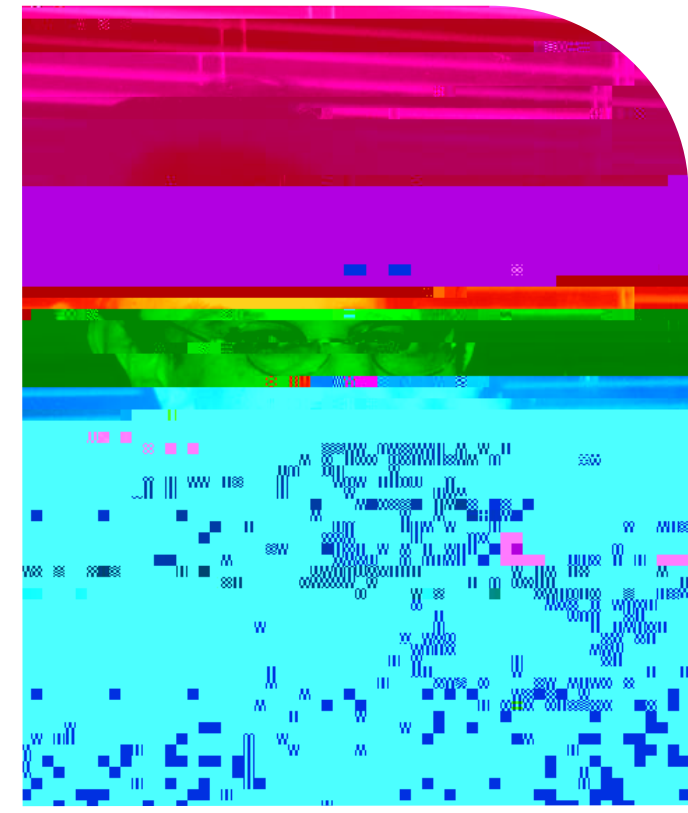
Our planet is presently in the midst of a mass extinction. A large number of Earth's plants and animals have either become extinct or are threatened with elimination. The discipline of conservation biology examines this crisis for our biodiversity from multiple perspectives, including ecology, economics, and ethics. In this course, we explore the reasons for this catastrophe: habitat loss, alien species, pollution, and over-exploitation. We consider solutions for protecting species, such as the establishment of nature reserves. Students conduct a class project in which they examine the conservation needs of a species or a region.

### Related careers:

Useful for those considering careers in wildlife conservation. An important course for Zoology and Botany students to understand the biodiversity crisis.

### Prerequisites:

Zool 1110 and SI 1120, or approval of instructor



*Dr. Sam Zevelo*  
Professor and Department Chair  
801.626.6655  
szevelo@weber.edu

*Dr. Sam Zevelo has an extensive background in teaching about and studying wildlife conservation. He has edited books on wilderness issues and has published articles on conservation biology. In this course, he hopes to convey the significance of the biodiversity crisis and suggest what students can do to become involved in conservation efforts.*

